

For a complete listing of all ICS® Authorized Dealers and Service Centers, visit us on the web at [www.icsbestway.com](http://www.icsbestway.com). Or, for the name of the dealer nearest you, just call 800-321-1240.



**The best way  
to cut concrete™**

ICS, Blount Inc.  
4909 SE International Way  
Portland, OR 97222 USA  
800-321-1240  
Fax 503-653-4393

ICS, Blount Europe SA  
Rue Buisson Aux Loups, 8  
B 1400 Nivelles, Belgium

[www.icsbestway.com](http://www.icsbestway.com)



**The best way to cut concrete™**



**Concrete Saws and Diamond Chains**

© Copyright 2006 ICS, Blount Inc. Specifications subject to change without notice. All rights reserved. ICS, Redzaw, Wallwalker, and SealPro are registered trademarks of ICS, Blount Inc. The best way to cut concrete, SpeedHook, and TSS are trademarks of ICS. 12175

[www.icsbestway.com](http://www.icsbestway.com)



# ABOUT ICS

## The Company

Founded in 1992, in Portland, Oregon USA, ICS is the World Leader in Diamond Chain Technology™. ICS designs, manufactures and sells concrete saws, diamond chain and a full range of construction related products and specialty accessories.



As the inventor of Diamond Chain Technology for cutting concrete, ICS has continually developed new patented designs and innovative products, rapidly growing from that first diamond chain into a multi-million dollar manufacturing, sales and distribution company.

Still headquartered in Portland, Oregon, ICS also has a sales and distribution office in Belgium and a worldwide distribution network covering more than 100 countries.

ICS Concrete Saws, Diamond Chains, and related products are sold and supported by a worldwide network of ICS Authorized Dealers and backed by a comprehensive network of factory trained service centers.



## The Technology

ICS Concrete Saws let you make deeper, cleaner and more accurate cuts...in less time. Deeper cuts and square corners means getting the job done with fewer steps. No more trying to match up cuts from both sides. No more impact tools that risk damage to the surrounding concrete or masonry. No more overcutting corners. Eliminating over-cuts reduces patchwork. Cut deep. Cut fast. Cut all the way through from one side. Eliminate over-cuts. Reduce patchwork. Less excavation. More precision.

## Principal Technology Advantages

- Deep Cuts (up to 24")
- Square Corners
- Tight Spaces
- Single-Side Access
- Small Holes (3"x3")
- Lightweight & Portable
- Time Savings
- No Rotational "Kickback"(Grinding vs. Chipping)





# APPLICATIONS

## General Construction

- From under 18 lbs - high power-to-weight ratio in a compact design to fit in every gang box
- Easy to use, ready to work in minutes for any crew member
- Safe, abrasive cutting for precision work
- Low maintenance - simply rinse off and lube bar, chain, and starter area before putting away
- Cut openings as small as 3 1/2" - great for mechanical and electrical applications
- Deep plunge cuts with no over-cuts for huge savings over conventional methods

## Applications

- Foundations
- Concrete pipe
- Electrical box openings
- Ventilation openings



## Utility Construction

- Plunge cut straight into concrete pipe
- Non-percussion, less risk of damage
- Lightweight and Portable
- Less Excavation

## Applications

- Pipe Taps
- Trim Manholes to Grade
- Utility Vaults
- Small Openings



## Landscape Construction

- Deep plunge cuts for holes in water features and fountains
- Abrasive cutting chain for precision work on rocks and stone
- Steerable to cut arcs on stones and pavers
- From under 18 lbs - small and lightweight for job site portability
- Inexpensive replacement chains for per job bidding

## Applications

- Miter, angle and arc cuts
- Natural Stone - water features & fountains
- Notch stones to create water channels



## Masonry Construction

- From under 18 lbs - go "with the tool" not "to the tool"
- Openings as small as 3 1/2" allow for clean removal of single bricks
- Non-percussive operation - safely cut without damaging materials
- Easily cut from 9-24" deep (depending on saw model) for square corners and no over-cuts
- Multi-material chains that cut brick, block, stone, concrete, and synthetic materials
- Cut angles and miters in the wall or on scaffolding without heavy non-portable equipment

## Applications

- Windows & Doors
- Masonry repair
- Scupper holes
- Beam pockets
- Remodel brick walls





# THE 613GC



**The 613GC Cut-Off Saw from ICS® cuts twice the depth of an ordinary circular blade cut-off saw!**

## Lowest Price

- Costs less to purchase than any other ICS® Brand Concrete Saw
- No hydraulic power source needed

## Features

- Only 21 lbs complete!
- Versatile and easy to use
- 12 and 14-inch bars available
- Rear port multi-chamber air filter designed for wet-cutting
- Safe to use - no "kick-back"

## Application

The lowest priced ICS® Brand saw, the 613 is an excellent occasional use concrete saw. The 613GC has an excellent power-to-weight ratio, delivering enough power to plunge-cut up to 14-inches straight into a concrete wall or floor. Cuts concrete and masonry and will handle light rebar. Not recommended for heavy production use. Should not be used indoors.

## 613GC-12 Cut-Off Saw Package

*Includes: 613GC Cut-Off Saw, 12-inch Guidebar and TwinMAX-29 Diamond Chain. Other Diamond Chain types available for replacement.*

## 613GC-14 Cut-Off Saw Package

*Includes: 613GC Cut-Off Saw, 14-inch Guidebar and TwinMAX-32 Diamond Chain. Other Diamond Chain types available for replacement.*

## Product Specifications:

	613GC
Weight	21 lbs (9.5 kg) with bar and chain
Bar Length	Up to 14-inches (35 cm)
Engine Speed	12000 ± 500 rpm, electronically governed 2800-3200 rpm idle
Horsepower	5.7 hp (4.2 kW) @ 9000 rpm
Engine Type	2-stroke, single-cylinder, air-cooled
Displacement	4.9 cu.inch (80 cc)





# THE 633GC



**The freedom to cut concrete anywhere!  
Just connect water hose and cut.**

## Low Cost

- Lower initial cost than hydraulic saws
- No hydraulic power source needed

## Features

- 14 and 16-inch bars available
- Advanced air filtration
- Specialized crankshaft seals
- Safe to use - no "kick-back"

## Application

Our biggest and most powerful gas saw, the 633GC is an excellent choice for cutting concrete and masonry even if the concrete is reinforced with rebar. The 633GC can be used for general construction, demolition, remodeling and renovation. Diamond chains and guidebars up to 16-inches make the 633GC the deepest cutting gas saw from ICS®. Best for non-production occasional use. Should not be used indoors.

## 633GC-14 Cut-Off Saw Package

*Includes: 633GC Powerhead, packaged with either a 14-inch bar and TwinMAX Diamond Chain. Other Diamond Chain types available for replacement.*

## 633GC-16 Cut-Off Saw Package

*Includes: 633GC Powerhead, packaged with either a 16-inch bar and TwinMAX Diamond Chain. Other Diamond Chain types available for replacement.*

## Product Specifications:

	633GC
Weight	27.5 lbs (12.5 kg) with bar and chain
Bar Length	Up to 16-inches (40 cm)
Engine Speed	11500 ± 500 rpm mechanically governed 2500-2800 rpm idle
Horsepower	6.5 hp (4.8 kW) @ 8700 rpm
Engine Type	2-stroke, single-cylinder, air-cooled
Displacement	6.2 cu.inch (101 cc)





# THE 853PRO



## High Performance for the Pro Cutter

ICS® developed the high-performance 853PRO Series Hydraulic Concrete Cutting Chainsaws for the Professional Concrete Cutter. This series of professional saws is built tough to stand up to everyday use in the harsh environment of concrete cutting. Get the unique versatility of a genuine ICS® concrete cutting chainsaw, including the ability to cut small mechanical openings and deep plunge cuts. You can cut up to 24-inches with our longest professional guide bar and you can cut to within .087" from a wall with the 853PRO-F Flush-cut Saw. Available in 8 gpm and 12 gpm.

*\*For fixed-flow hydraulic systems producing more than 8 gpm (30 liters/min.), use ICS® Model 70350 Flow Adapter Valve.*

## Advantages and Uses

- Fast, efficient, and versatile
- Cuts mechanical openings quickly and perfectly
- Narrow, straight plunge cuts up to 24-inches deep
- Perfect square corners
- Safe, reliable and easy to maintain
- Chain tensioning system is guaranteed for the life of the saw
- Low cost of operation

## Features

- Safety operating trigger prevents accidental starting
- Automatic water valve integrated with hydraulic trigger provides water on demand
- Built-in WallWalker® provides leverage advantage to make cutting easier
- Modular design for easy service
- Ergonomic rear handle allows multiple hand positions
- Tough industrial finish on die-cast aluminum body for long lasting durability



The New 853PRO-F  
Flush-cut Saw

## Product Specifications:

	853PRO	853PRO Plus
<b>Weight</b>	15-inch bar and chain: 27.3 lbs. (12.4 kg) 19-inch bar and chain: 28.0 lbs. (12.7 kg) 24-inch bar and chain: 29.0 lbs. (13.2 kg)	15-inch bar and chain: 27.3 lbs. (12.4 kg) 19-inch bar and chain: 28.0 lbs. (12.7 kg) 24-inch bar and chain: 29.0 lbs. (13.2 kg)
<b>Bar Lengths</b>	11 inches (28 cm) 15 inches (38 cm) 19 inches (48 cm) 24 inches (61 cm)	11 inches (28 cm) 15 inches (38 cm) 19 inches (48 cm) 24 inches (61 cm)
<b>Operating Speeds</b>	5700 rpm 4900 sfm	5500 rpm 4600 sfm
<b>Torque:</b>	95 in-lbs	150 in-lbs
<b>Horsepower</b>	11 hp	15 hp
<b>Hydraulic Supply*</b>	8 gpm (30 liters/min.) 2500 psi (172.5 bar)	12 gpm (45 liters/min.) 2500 psi (172.5 bar)
<b>Vibration Level</b>	8 meters/second <sup>2</sup> (front handle)	8 meters/second <sup>2</sup> (front handle)





# THE 814PRO



## Full Features in a Compact Size

The 814PRO is a rugged, reliable tool designed for the rigors of construction, yet it's smaller and lighter than our other hydraulic tools. Ideal for utility work, like plumbing or electrical openings, the 814PRO saw will cut openings as small as 3.5 X 3.5 inches.

## Advantages and Uses

- Extremely lightweight and versatile
- All the benefits of diamond chain technology in a compact, easy to use size.
  - Perfect corners, without over-cutting
  - Plunge cuts up to 13-inches deep
  - Very small openings (3.5 inches x 3.5 inches)
- Costs less than full size hydraulic saws
- Reliable, safe and low maintenance
- Hydraulic system and integrated design extremely rugged and easy to service
- Quick and easy clean-up when used with TSS™ system

## Features

- Automatic water valve minimizes water mess and cleanup
- Built-in WallWalker® provides leverage advantage to make cutting easier
- Short hydraulic pigtails with flush-face connectors for quick attachment to power pack or mobile skid loader
- Quick change motor cartridge and seal, without plumbing
- Quick change rim-type sprocket
- Easy conversion for use with SpeedHook®

## Product Specifications:

	814PRO
Weight	15 lbs (6.8 kg) with bar and chain
Bar Length	13 inches (32 cm)
Operating Speed	4950 fpm (25 m/s), free running
Horsepower	11 hp
Hydraulic Supply	8 gpm (30 liters/min) 2500 psi (172.5 bar)
Vibration Level	3.5 meters/second <sup>2</sup> (front handle)





# DIAMOND CHAINS & BLADES

Insist on genuine ICS® Brand Diamond Chains and you can be assured of the latest innovation, highest quality and safety.

## MAX Series Diamond Chains

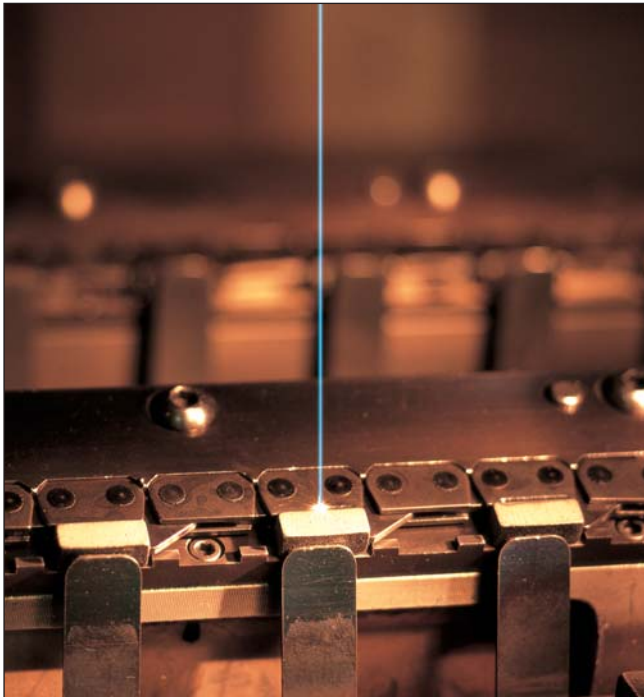
Patented bumper design for smooth cutting performance. MAX series diamond chains are designed to be the best general purpose chains for ICS® brand gas concrete saws.

## Redzaw® Diamond Chains

Narrower diamond segments and a chain chassis matched for best performance, speed and value when used on the Redzaw® RZ60. Redzaw® Diamond Chains are the lowest price chains available and there are four types for various applications.

## PRO Series Diamond Chains

Engineered for the highest possible performance, these are the chains the PRO Cutters prefer. The PRO Series also includes the new PRK™ diamond chain cutting system for revolutionary cutting speed and precision.



## Redzaw® Diamond Blades

- Broad selection to cut concrete, masonry, stone, ductile iron, concrete pipe, asphalt and many other materials
- Three quality levels
  - Premium - best for hard aggregate and steel
  - General Purpose - best for everyday, multi-purpose cutting
  - Economy - best for budget-minded cutting
- MBS™ Series top grade diamonds
- Designed for consistent cutting performance in a wide range of materials
- 1" arbor with knockout ring for 20 mm arbor
- Ductile blade for long life and fast cutting performance on iron pipe
- Complies with ANSI B7.1 and B7.5 safety standards



## Guidebars

Genuine ICS® guidebars, replacement parts and other accessories keep you cutting at peak efficiency.







# THE RZ60



## Product Specifications:

	RZ60
Weight	17.6 lbs (8.0 kg)
Bar Length	up to 12-inches (30 cm)
Engine Speed	11500 +/- 500 rpm, electronically governed 2800-3200 rpm idle
Horsepower	4.2 hp (3.1 kW) @ 9500 rpm
Engine Type	2-stroke, single-cylinder, air-cooled
Displacement	3.9 cu-in (64 cc)

## Unmatched Economy, Speed and Utility

- Narrow-kerf Diamond Chain cuts faster
- Plunge cuts up to 12-inches for deep, fast cutting
- Rear-port multi-chambered air filtration designed for wet-cutting
- Double-pad fixed WallWalker® for stable cutting and less vibration
- Decompression valve eases starting effort by 50%
- Ergonomic handle for balanced vertical and horizontal cutting
- Externally mounted clutch for increased cooling and longer life
- Chain mounted inside clutch provides better saw balance by placing bar closer to center of saw
- Compensating carburetor for reliability and performance even at altitude
- Starter designed for durability and performance in wet-cut environment
- All metal water valve construction provides longer life and smooth adjustment



**REDZAW**



# THE RZ60C



## Product Specifications:

	RZ60C
Weight	23 lbs (10.5 kg)
Blade Speed	5100 rpm
Engine Speed	10500 +/- 500 rpm, electronically governed 2800-3200 rpm idle
Horsepower	4.2 hp (3.1 kW) @ 9500 rpm
Engine Type	2-stroke, single-cylinder, air-cooled
Displacement	3.9 cu-in (64 cc)

## Proven Reliability and Performance

- Advanced rear-ported, multi-stage air filtration and compensating carburetor for longer engine life
- Reversible blade arm for closer cutting to walls and the ground
- Uses 12" or 14" Blades with 1" or 20 mm arbor
- Decompression valve for 50% easier starting
- Adjustable blade guard for on the fly adjustments with no tools required
- Ergonomic handle for balanced horizontal and vertical cutting
- Starter designed for durability and performance in wet or dry environment easing starter return and providing longer starter life
- Adjustable arbor for versatile blade usage
- Steel blade guard to protect operator from either abrasive or diamond blades





# ACCESSORIES

## The ICS Multiflow Power Pack

A dependable, self-contained source of hydraulic power, the ICS® Multiflow powerpack delivers superior cooling capacity and an ergonomic and extremely functional design that makes it easily transportable to any job site.

### Specifications

#### Engine

- Briggs & Stratton
- Electric Start
- 18 horsepower V-Twin, air cooled
- Fuel Capacity: 4.2 gal (15 liters)



#### Hydraulic System

- 8 gpm (30 liters/min) at 2,500 psi (172 bar) or 5 gpm (20 liters/min) at 2,500 psi (172 bar)
- Reservoir: 2.7 gal (11 liters)
- Relief valve setting: 2,100-2,300 psi (145-158 bar)

#### Dimensions

- Length: 33" (84 cm), Width: 21.5" (55 cm), Height: 29" (74 cm)

#### Weight

- 216 lbs (98 kg)

## Flow Adapter Valve

Leave the noise and fumes a comfortable distance away. Smooth, quiet operation of any ICS® hydraulic saw can be powered from other hydraulic equipment with a simple adapter.



## SpeedHook® - Less Operator Effort

SpeedHook® is an ingenious accessory that attaches quickly and supports the weight of your saw to dramatically reduce operator fatigue. SpeedHook® increases saw stability during cutting and also increases chain life.



### Features

- Extremely Inexpensive (Compared to wall saws)
- Simple and Easy to Use
- Lightweight 18 lbs (8 kg)
- Adjustable, Two Anchor Mounting
- Convertible Left or Right Side Use
- Expandable 42" (105 cm) & 21" (53 cm) Sections
- Stable Cutting Increases Diamond Chain Life

## Total Slurry Solutions (TSS™) Hi-Lift Performance Vacuum Systems

The Total Slurry Solutions (TSS™) Hi-Lift Performance vacuum systems provide an easy way to contain and dispose of the slurry produced when wet-sawing or drilling in concrete, masonry or stone materials.

### TSS 15/55™

- Hi-Lift, 105 inches of water-lift, 112 cfm
- 2 hp bypass motor
- 110 v/60 hz
- Float assembly with auto shut off



### TSS-15™

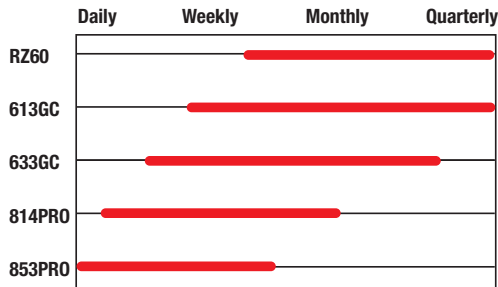
- Polyethylene tank, won't dent or corrode, (actual fill capacity 15 gallons)



# USER TIPS

## Saw Selection

In addition to cutting depth and power requirements, use this chart to help you select the right saw for your needs based on frequency of use



## ICS® 2 Stroke Engine Oil

ICS has developed an oil formula that is cleaner burning, provides better thermal protection and an improved film barrier which reduces piston ring wear. Failure to use ICS® Oil and a 25:1 ratio may result in premature engine failure and/or up to 90% reduction in engine life.

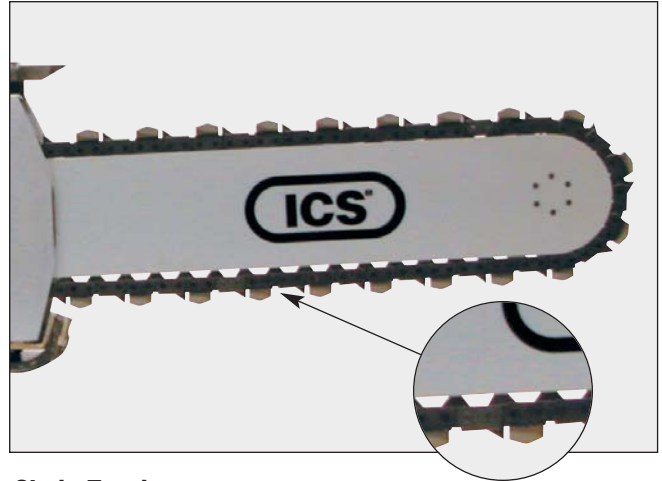


## Cutting Tips

When using a new chain, it will be necessary to "open up" the diamonds. Opening diamonds will increase cutting speed. Use minimum 20 psi water pressure. Always cut full throttle. Slowly plunge straight into wall. Push hard enough to cause the RPM's to drop by 25-30%. Always apply steady feed force. For safety instructions please read owner's manual.

## Carrying Cases

Protect your investment with a high quality carrying case from ICS®.



## Chain Tension

Chain based cut-off saws run with much looser chain tension than wood chainsaws. It is very common on chain-based cut-off saws to have the drive links hang completely out of the bar. The rule of thumb is: the chain should be able to be pulled around by hand with ease. For more information refer to the ICS Chain Tensioning Tip Sheet.



## Maintenance

Always rinse saw with water and lubricate bar and chain. Inspect air filter after every use and change every 2-3 chains.

## Bar/Chain Lubrication

Thin film of WD-40® or equivalent on bar and chain prior to use will help reduce friction and ensure proper chain break-in.